



中外合资
Sino-foreign Joint Venture



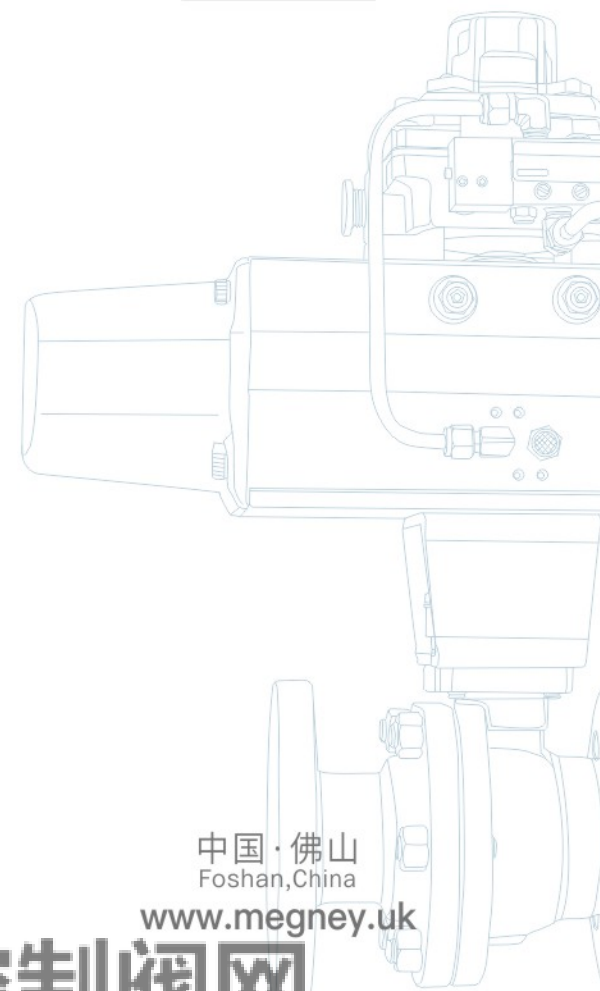
美格尼流体控制(中国)有限公司
MEGNEY FLUID CONTROL (CHINA) CO., LTD

Http: //www.megney.uk
E-mail: mgnzg@megney.uk

服务热线: 400-6089-456
Service Hotline

© 美格尼·中国 版权所有，翻版必究； All rights reserved by Megney China;
若有改动，恕不另行通知。请用户使用最新版本，美格尼·中国拥有最终解释权；
Subject to change without notice. Please use the latest version, Megney China has the final interpretation right;
采用生态纸印刷。Printed on Eco paper.

MEGNEY



中国·佛山
Foshan, China
www.megney.uk

三千控制阀网
www.CV3000.com

UK MEGN GROUP

Megney® 美格尼·中国

与您分享国外高品质流体控制阀方案
Share With You The Schemes of Premium Foreign Fluid Control Valves

COMPREHENSIVE Sample of Control Valve 控制阀综合样本





COMPANY PROFILE

UK MEGN Group Co., Ltd. is a well-known innovative automation group in Europe. It is headquartered in Salsgate District of London, UK, and has R&D and processing centers in Germany, US, Korea, Malaysia, and Taiwan region. MEGN Group has long been committed to the research and application of industrial process automation, and providing long-term support and technical solution to famous brands around the globe.

British Megney Precision Instrument Control Company, which was founded in 1976, is specialized in control valves and actuator products. It has over 400 well-trained staff, engaging in fluid control of industrial automation from chemical industry to new energy industrial technologies. After being merged into MEGN Group in 2018, it is now the Fluid Control Business Department of MEGN Group.

Megney Fluid Control (China) Co., Ltd. is a joint venture established by strategic investments of both Chinese and British sides, aiming to achieve more efficient global management and better serve users of Asia-Pacific region, including Chinese market. Megney China has been developed greatly since its foundation, possessing high precision CNC machining center, complete workpiece processing equipment, and full-process inspection instruments. Skillful engineers are always ready to provide timely and professional services to users across China and maximally satisfy the demands of the users.

Relying on the excellent quality, exquisite techniques, professional and honest services, Megney China has been widely recognized by Chinese users. Its products have been successfully applied in petroleum, petrochemical, chemical, coal chemical, chemical fiber, nuclear power, metallurgy, mine, natural gas, environmental protection, medical and pharmaceutical, new materials, new energy, and municipal engineering fields. With the advanced technical capability and the continuous efforts of all staff, Megney China will keep providing customers with reliable and outstanding services, and become the most trustful cooperation partner of more customers!

Megney China has obtained a series of certificates, including: TS Manufacture License for Special Equipment of Pressure Pipeline Valves, ISO9001 Quality Management System Certificate, ISO14001 Environment Management System Certificate, ISO45001 Occupational Health and Safety Management Certificate, German TUV API Fire Prevention Certificate, German TUV IEC61508 Safety Integrity Level-3 (SIL3) Certificate, TUV 15848 Low Leakage Certificate, EU CE Certificate, Five-star After-sales Service Certificate, Five-star Brand Service Certificate, 3A Enterprise Credit Certificate, etc. The products are mainly designed and manufactured against DIN, ANSI, API, JIS, BS, NF, and GB standards. Main products: pneumatic/electric control valves, ball valves, butterfly valves, and process valves, etc.

公司简介

英国MEGN集团有限公司是欧洲知名的创新型自动化集团公司，公司总部座落于英国伦敦绍斯盖特区并在德国、美国、韩国、马来西亚、台湾设有研发及加工中心，MEGN公司长期致力于工业过程自动化的研究和应用，为全球知名品牌长期提供技术方案支持与协作。

英国美格尼精密仪器控制公司成立于1976年，是一家专业从事控制阀、阀门执行机构产品的公司，超过400名训练有素的员工，专业领域涉及从大化工到新能源工业技术，致力于工业自动化的流体控制。于2018年并入MEGN集团公司，现隶属于MEGN公司流体控制事业部。

Megney美格尼流体控制(中国)有限公司是英国MEGN集团有限公司为了更快捷高效的全球管理和服务亚太地区包括中国市场的用户，中英双方战略投资组建成立的合资公司。Megney美格尼·中国成立以来取得了长足发展，拥有了高精度的数控加工中心、完整的工作处理设备 and 全流程检测检验仪器。公司训练有素的工程师可以给全国的客户及时专业的服务。最大限度地满足用户的需求。

Megney美格尼·中国优良的品质、精湛的技艺和专业而诚信的服务，赢得了诸多中国用户的信任，在石油、石化、化工、煤化工、化纤、核电、冶金、矿山、天然气、环保、医药、新材料、新能源、市政工程等诸多领域得到成功应用。依托先进的技术能力和全体员工的不断努力，Megney美格尼·中国将为客户提供可靠的产品和优质的服务，成为更多客户最为信赖的合作伙伴！

Megney美格尼·中国已通过TS特种设备压力管道阀门制造许可证、ISO9001质量管理体系认证、ISO14001环境管理体系认证、ISO45001职业健康管理体系认证、德国TUV、API防火认证、德国TUV、IEC61508、SIL3安全完整性、功能认证、德国TUV、15848低泄漏认证、欧盟CE认证、五星售后、服务认证、3A企业信用认证等。产品主要采用DIN、ANSI、API、JIS、BS、NF、及GB标准设计制造，主要产品有：气动/电动调节阀、球阀、蝶阀、工艺阀门等。



UK MEGN GROUP
Megney®

英国美格尼集团 中国区·运营服务中心
UK MEGN GROUP China Operations Service Center

特种设备生产许可证 ISO9001:2008/ISO9001:2015 欧盟CE认证 防爆认证 3C强制认证 IEC61508 SIL3认证 ISO 15848认证 API 607认证



LEADING TECHNOLOGY, EXCELLENT PRODUCT 领先的技术, 优异的产品

Megney公司以精湛的技术为基础, 从设计、材料、加工、检测到整体性能都实行最严格的标准要求, 产品连续多次经英国第三方权威机构检测质量达到国际先进水平, 领先的技术、优异的产品性能, 为合作伙伴提供优质安全高效的产品。

Megney is based on exquisite technology, from the design, materials, processing, inspection of the overall performance of the implementation of the most stringent standards. Its products have been tested by British third-party authorities for many times and have reached the international advanced level. Leading technology, excellent product performance provide partners with high-quality, safe and efficient products.



生产车间
PRODUCTION WORKSHOP

全系列产品证书 FULL RANGE OF PRODUCT CERTIFICATES



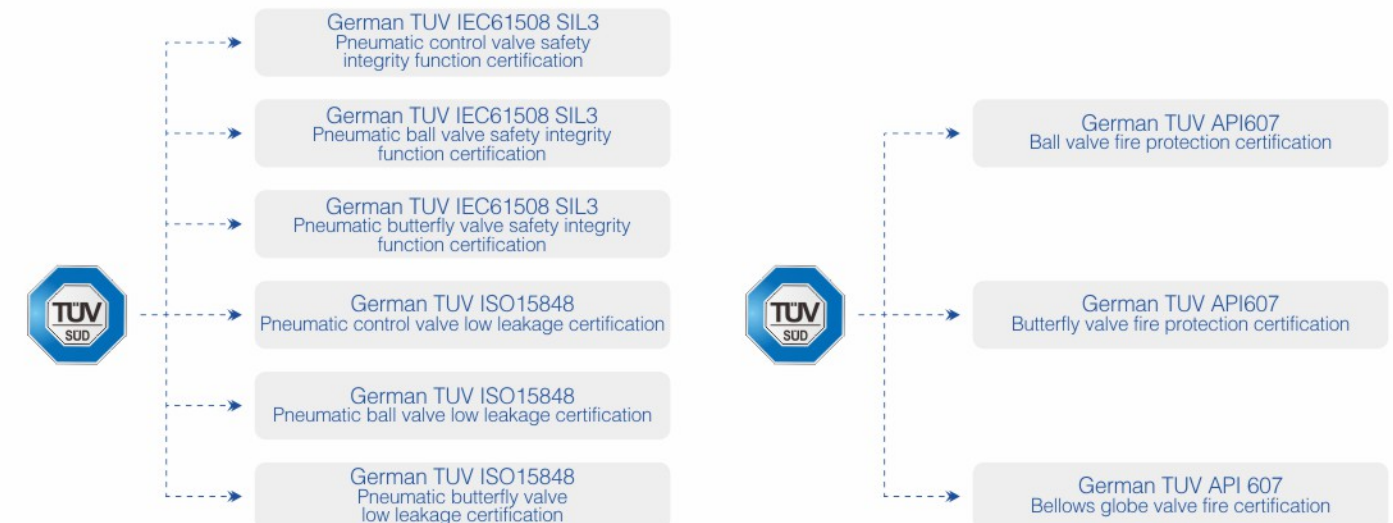
Megney全系列产品获得权威机构颁发证书



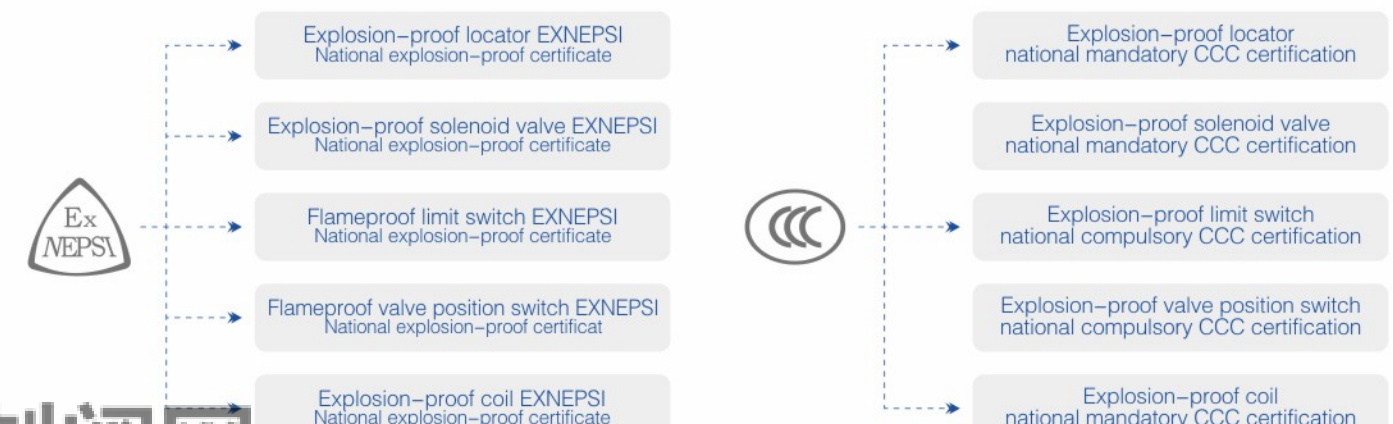
Megney全系列产品获得权威机构颁发证书



Megney The whole series of products have obtained certificates issued by authoritative organizations



Megney The whole series of products have obtained certificates issued by authoritative organizations



产品目录

- 01 **ME650** 浮动球阀
Floating Ball Valve
- 02 **ME650** 两位三段式切断阀
Two-position Three-stage Shut-off Valve
- 03 **ME650F** 短系列浮动球阀
Short Series Floating Ball Valve
- 04 **ME670** 固定球阀
Trunnion Mounted Ball Valve
- 05 **ME670Y** 硬密封球阀
Metal Seated Ball Valve
- 06 **ME650** 三通球阀
Three-Way Ball Valve
- 07 **ME670** V型球阀
V-Type Ball Valve
- 08 **ME670** 旋转控制阀
Rotary Control Valve
- 09 **ME650** 内衬全陶瓷球阀
Fully Ceramic Lined Ball Valve
- 10 **ME650** 钢衬球阀
Steel Lined Ball Valve

与您分享国外高品质流体控制阀方案
Share With You The Schemes of Premium Foreign Fluid Control Valves

- 11 **ME670** 中线衬胶蝶阀
Concentric Rubber Lined Butterfly Valve
- 12 **ME670** 双偏心高性能蝶阀
Double-offset High-performance Butterfly Valve
- 13 **ME670** 全金属三偏心硬密封蝶阀
All Metal Triple-offset Metal Seal Butterfly Valve
- 14 **ME670** 通风蝶阀
Ventilation Butterfly Valve
- 15 **ME670** 钢衬防腐蝶阀
Steel Lined Anti-corrosion Butterfly Valve
- 16 **ME10T** 气动套筒调节阀
Pneumatic Cage Control Valve
- 17 **ME10P** 气动单座调节阀
Single-seat Pneumatic Control Valve
- 18 **ME10P** 气动内衬调节阀
Pneumatic Lining Control Valve
- 19 **ME10P** 气动波纹管调节阀
Pneumatic Bellows Control Valve
- 20 **ME13** 三通合/分流调节阀
Three-way Combined/Divided Control Valve

UK MEGN GROUP
Megney® 美格尼·中国

- 21 **ME300P** 自力式压力调节阀
Self-Operated Pressure Control Valve
- 22 **ME300W02** 氮封装置控制阀
Nitrogen Seal Control Valve
- 23 **ME650** 电动智能一体化球阀
Electric Intelligent Integrated Ball Valve
- 24 **ME670** 电动智能一体化中线衬胶蝶阀
Electric Intelligent Integrated Concentric Rubber Lined Butterfly
- 25 **ME10DJ** 气动紧急切断阀
Pneumatic Emergency Shut-off Valve
- 26 **ME50X** 卡套式旋塞阀
Ferrule Plug Valve
- 27 **ME** 气动执行机构
Pneumatic Actuator
- 28 **MEB** 气动执行机构
Pneumatic Actuator
- 29 **MEGN** 电动执行机构
Electric Actuator



ME650 浮动球阀

/ Floating Ball Valve

**概述及应用**

ME650系列浮动球阀结构简单，球体为浮动结构依靠介质作用在球体上的单项力，使球体向一侧的阀座靠拢。通过挤压阀座实现密封功能，主要应用于低压的切断场合。该系列阀门是作为管道开关使用的理想产品，它具有结构紧凑、重量轻、流通能力高、切断性能好、使用寿命长等特点。目前是蒸汽、烃类、腐蚀性介质等工况的最佳选择。

产品特点

- ◇执行机构连接采用ISO5211国际标准
- ◇全通径结构及锁定装置设计
- ◇流通能力强、流阻小、双向密封
- ◇阀杆防飞出结构、防火、防静电设计
- ◇阀腔带自泄压
- ◇阀座带有自洁功能
- ◇可选多种执行机构

技术参数 Technical Parameters

公称通径Nominal diameter	DN15~DN300(1/2"~12")
压力等级Pressure grade	PN16~PN100(Class150~600)
工作温度Operating temperature	-40℃~425℃
连接方式Connection	法兰、螺纹、焊接、卡套 Flange, thread, welding, and cutting sleeve
密封形式Sealing	软密封、金属密封 Soft seal, Metal seal
主要材质Main materials	碳钢、不锈钢、特种合金 Carbon steel, stainless steel, and special alloy

Overview and Application

The ME650 Series floating ball valve features a simple structure. With a floating structure, the ball approaches a lateral seat by relying on the single force applied by the medium onto the ball. It can achieve sealing functions by extruding the seat. It is mainly applied to low-pressure shut-off scenarios. Such valves are perfect choices for pipeline switches, for they have apparent features, such as compact structure, low weight, high flow capacity, outstanding shut-off performance, and long service life. Currently, it is the best choice for the working conditions involving steam, hydrocarbon, and any corrosive mediums.

Product Features

- ◇The international standard ISO5211 is adopted for the actuator;
- ◇Full-bore structure and lock device design;
- ◇Excellent flow capacity, small flow resistance, and two-way sealing;
- ◇Stem anti-popping structure, fireproof and anti-static design;
- ◇Cavity with self-pressure relief;
- ◇Seat with self-cleaning function;
- ◇Multiple actuators are optional.

产品认证 Product Certification

TUV IEC61508-SIL3安全完整性功能认证
TUV ISO15848低泄漏认证
TUV API607防火认证

TUV IEC61508-SIL3 Certification of safety and integrated functions
TUV ISO15848 Low-leakage certification
TUV API607 Fireproofing certification

**ME650** 两位三段式切断阀

/ Two-position Three-stage Shut-off Valve

**概述及应用**

ME650系列两位三段式切断阀是一种能实现两位开或两位关动作的切断阀，是一种特殊的气动阀门，提供了0°，45°，90°，或0°，90°，180°的三位式操作方式，由两段式气动执行器和球阀或蝶阀组成，通过改变附加气缸的活塞行程，执行器和阀门转角被停止在预先设定的角度（45°~90°），因此阀门流量得以调节，这种装置靠两个电磁阀控制阀门的流量。由于执行机构内采用了快速排气及节流功能，使开阀、关阀速度减缓，使管道中流体变化平稳。

产品特点

- ◇执行机构连接采用ISO5211国际标准
- ◇全通径结构及锁定装置设计
- ◇流通能力强、流阻小、双向密封
- ◇阀杆防飞出结构、防火、防静电设计
- ◇阀腔带自泄压
- ◇阀座带有自洁功能
- ◇可选多种执行机构

技术参数 Technical Parameters

公称通径Nominal diameter	DN15~DN200(1/2"~8")
压力等级Pressure grade	PN16~PN100(Class150~600)
工作温度Operating temperature	-40℃~450℃
连接方式Connection	法兰、螺纹、焊接 Flange, Thread, Welding
密封形式Sealing	软密封、金属密封 Soft seal, Metal seal
主要材质Main materials	碳钢、不锈钢、特种合金 Carbon steel, stainless steel, and special alloy

Overview and Application

The ME650 Series two-position three-stage shut-off valve can fulfill two-position on or off movements. As a special pneumatic valve, it provides three-stage operations at 0°, 45°, 90° or 0°, 90°, 180°. The valve is composed of a two-stage pneumatic actuator and one ball valve or butterfly valve. By changing the piston stroke of the additional cylinder, the actuator and valve rotation angle are stopped at the preset angle (45°~90°). As a result, the valve flow is regulated. The device uses two magnetic valves to control the valve flow. The actuator is equipped with rapid exhaust and throttling functions to reduce the speed of turning on/off the valve and stabilize the fluid changes in the pipeline.

Product Features

- ◇The international standard ISO5211 is adopted for the actuator;
- ◇Full-bore structure and lock device design;
- ◇Excellent flow capacity, small flow resistance, and two-way sealing;
- ◇Stem anti-popping structure, fireproof and anti-static design;
- ◇Cavity with self-pressure relief;
- ◇Seat with self-cleaning function;
- ◇Multiple actuators are optional.

产品认证 Product Certification

TUV IEC61508-SIL3安全完整性功能认证
TUV ISO15848低泄漏认证
TUV API607防火认证

TUV IEC61508-SIL3 Certification of safety and integrated functions
TUV ISO15848 Low-leakage certification
TUV API607 Fireproofing certification



ME650F / 短系列浮动球阀

/ Short Series Floating Ball Valve

**概述及应用**

ME650F短系列浮动球阀无支持撑轴，被阀座夹持呈“浮球”状态；很少的球阀积料，广泛用于各类反应釜底部放料或需要无积料场合。

产品特点

- ◇执行机构连接采用ISO5211国际标准；
- ◇全通径结构及锁定装置设计；
- ◇流通能力强、流阻小、双向密封；
- ◇阀杆防飞出结构、防火、防静电设计；
- ◇阀腔带自泄压；
- ◇阀座带有自洁功能；
- ◇可选多种执行机构；

主要材质

- ◇阀体：碳钢、不锈钢、合金钢、双相钢等；
- ◇阀芯：不锈钢、双相钢等。

技术参数 Technical Parameters

公称通径Nominal diameter	DN15~DN350
压力等级Pressure grade	Class150~900)
工作温度Operating temperature	-40℃~450℃
连接方式Connection	法兰 Flange
密封形式Sealing	软密封、金属密封 Soft seal, Metal seal

Overview and Application

The ME650F short series floating ball valve has no support shaft, and it is "floating" because it is clamped by the valve seat; with less ball valve material deposits, it is extensively applied to the bottom of reactors or scenarios requiring the absence of material deposits.

Product Features

- ◇The international standard ISO5211 is adopted for the actuator;
- ◇Full-bore structure and lock device design;
- ◇Excellent flow capacity, small flow resistance, and two-way sealing;
- ◇Stem anti-popping structure, fireproof and anti-static design;
- ◇Cavity with self-pressure relief;
- ◇Seat with self-cleaning function;
- ◇Multiple actuators are optional.

Main material

- ◇Body: carbon steel, stainless steel, alloy steel, duplex steel, etc.;
- ◇Valve core: stainless steel, duplex steel, etc.

产品认证 Product Certification

TUV IEC61508-SIL3安全完整性功能认证
TUV ISO15848低泄漏认证
TUV API607防火认证

TUV IEC61508-SIL3 Certification of safety and integrated functions
TUV ISO15848 Low-leakage certification
TUV API607 Fireproofing certification

**ME670** / 固定球阀

/ Trunnion Mounted Ball Valve

**概述及应用**

ME670系列固定球阀是我公司总结多年球阀设计制造生产经验，消化吸收最新国际技术开发出的适合于化工、石化、耐腐蚀等工况的高性能软密封球阀产品，可以适应高压和大口径场合，广泛应用于石油、化工、天然气、电力、冶金、食品等行业。

产品特点

- ◇执行机构连接采用ISO5211国际标准
- ◇全通径结构及锁定装置设计
- ◇流通能力强、流阻小、双向密封
- ◇阀杆防飞出结构、防火、防静电设计
- ◇阀腔带自泄压
- ◇阀座带有自洁功能
- ◇可选多种执行机构

技术参数 Technical Parameters

公称通径Nominal diameter	DN15~DN500(1/2"~20")
压力等级Pressure grade	PN16~PN420(Class150~2500)
工作温度Operating temperature	-40℃~450℃
连接方式Connection	法兰、焊接 Flange, Welding
密封形式Sealing	软密封、金属密封 Soft seal, Metal seal
主要材质Main materials	碳钢、不锈钢、特种合金 Carbon steel, stainless steel, and special alloy

Overview and Application

The ME670 Series trunnion mounted ball valve is a high-performance soft-sealed ball valve, developed by our company by summarizing our years of experience in manufacturing ball valves and using the latest international technology. The product is applicable to chemical engineering, petrochemical, anti-corrosion, and other working conditions. Being used for high-pressure and large-caliber scenarios, it is extensively applied to the industries including petroleum, chemical engineering, natural gas, electric power, metallurgy, and food.

Product Features

- ◇The international standard ISO5211 is adopted for the actuator;
- ◇Full-bore structure and lock device design;
- ◇Excellent flow capacity, small flow resistance, and two-way sealing;
- ◇Stem anti-popping structure, fireproof and anti-static design;
- ◇Cavity with self-pressure relief;
- ◇Seat with self-cleaning function;
- ◇Multiple actuators are optional.

产品认证 Product Certification

TUV IEC61508-SIL3安全完整性功能认证
TUV ISO15848低泄漏认证
TUV API607防火认证

TUV IEC61508-SIL3 Certification of safety and integrated functions
TUV ISO15848 Low-leakage certification
TUV API607 Fireproofing certification



ME670Y

硬密封球阀

Metal Seated Ball Valve



概述及应用

ME670Y系列硬密封球阀阀座表面硬化处理，球体喷涂\喷焊硬质合金，密封阀座使用弹簧加载，刮刀结构，在较大的温度和压力变化范围内具有优良的密封性能，确保在高温、高压工况下依然运行稳定。该系列阀门主要适用于工况比较恶劣的情况下，它可满足高温、高压、耐磨、强腐蚀以及含有颗粒性介质等恶劣工况。

产品特点

- ◇执行机构连接采用ISO5211国际标准
- ◇全通径结构及锁定装置设计
- ◇流通能力强、流阻小、双向密封
- ◇阀杆防飞出结构、防火、防静电设计
- ◇阀腔带自泄压
- ◇阀座带有自洁功能
- ◇可选多种执行机构

技术参数 Technical Parameters

公称通径Nominal diameter	DN15~DN1200(1/2"~48")
压力等级Pressure grade	PN16~PN420(Class150~2500)
工作温度Operating temperature	-40℃~550℃
连接方式Connection	法兰、焊接 Flange, Welding
密封形式Sealing	软密封、金属密封 Soft seal, Metal seal
主要材质Main materials	碳钢、不锈钢、特种合金 Carbon steel, stainless steel, and special alloy

Overview and Application

Surface hardening is performed for the ME670Y Series metal-seated ball seat; hard alloy painting\spray welding is performed for the ball; a spring is used for the sealed seat for loading, and a scraper structure is used as well; it has excellent sealing properties in considerable ranges of temperature and pressure variations to ensure stable operations in high temperature, high pressure, and other working conditions. The series is mainly applied to severe working conditions, and it can meet adverse working conditions, such as high temperature, high pressure, wear, strong corrosion, and those with granular mediums.

Product Features

- ◇The international standard ISO5211 is adopted for the actuator;
- ◇Full-bore structure and lock device design;
- ◇Excellent flow capacity, small flow resistance, and two-way sealing;
- ◇Stem anti-popping structure, fireproof and anti-static design;
- ◇Cavity with self-pressure relief;
- ◇Seat with self-cleaning function;
- ◇Multiple actuators are optional.

产品认证 Product Certification

TUV IEC61508-SIL3安全完整性功能认证
TUV ISO15848低泄漏认证
TUV API607防火认证

TUV IEC61508-SIL3 Certification of safety and integrated functions
TUV ISO15848 Low-leakage certification
TUV API607 Fireproofing certification



ME650

三通球阀

Three-Way Ball Valve



概述及应用

ME650系列三通T型、L型球阀，四阀座结构。广泛应用于石油、化工、天然气、电力、冶金、食品以及处理等行业，主要用于换向、合流、分流等工况。

产品特点

- ◇执行机构连接采用ISO5211国际标准
- ◇全通径结构及锁定装置设计
- ◇流通能力强、流阻小、双向密封
- ◇阀杆防飞出结构、防火、防静电设计
- ◇阀腔带自泄压
- ◇阀座带有自洁功能
- ◇可选多种执行机构

技术参数 Technical Parameters

公称通径Nominal diameter	DN15~DN200(1/2"~8")
压力等级Pressure grade	PN16~PN50(Class150~300)
工作温度Operating temperature	-40℃~500℃
连接方式Connection	法兰、螺纹 Flange, thread
密封形式Sealing	软密封、金属密封 Soft seal, Metal seal
流道形式Flow	T型、L型、Y型 T type, L type, Y type
主要材质Main materials	碳钢、不锈钢、特种合金 Carbon steel, stainless steel, and special alloy

Overview and Application

The ME650 Series three-way T-type valve, L-type valve, and four-seat structure. Extensively applied to petroleum, chemical engineering, natural gas, electric power, metallurgy, food, treatment, and other industries for the working conditions including reversing, confluence, and diversion.

Product Features

- ◇The international standard ISO5211 is adopted for the actuator;
- ◇Full-bore structure and lock device design;
- ◇Excellent flow capacity, small flow resistance, and two-way sealing;
- ◇Stem anti-popping structure, fireproof and anti-static design;
- ◇Cavity with self-pressure relief;
- ◇Seat with self-cleaning function;
- ◇Multiple actuators are optional.

产品认证 Product Certification

TUV IEC61508-SIL3安全完整性功能认证
TUV ISO15848低泄漏认证
TUV API607防火认证

TUV IEC61508-SIL3 Certification of safety and integrated functions
TUV ISO15848 Low-leakage certification
TUV API607 Fireproofing certification



ME670**V型球阀**

V-Type Ball Valve

**概述及应用**

ME670系列V型球阀、单阀座设计，流通能力强，具有较大剪切力及自洁功能，特别适用于含纤维或微小固定颗粒状的介质，如纤维、污泥、矿浆等场合；广泛应用于炼油、造纸、化工、石化等行业。

应用场合

- ◇造纸工业中的纸浆和纤维控制
- ◇生化行业的浆料控制
- ◇环保行业的污泥控制
- ◇含粉尘和硬质颗粒流体控制
- ◇各种流量控制和压力控制

技术参数 Technical Parameters

公称通径Nominal diameter	DN25~DN500(1"~20")
压力等级Pressure grade	PN16~PN64(Class150~300)
工作温度Operating temperature	-40℃~425℃
连接方式Connection	法兰、对夹 Flange, Wafer
密封形式Sealing	软密封、金属密封 Soft seal, Metal seal
主要材质Main materials	碳钢、不锈钢、特种合金 Carbon steel, stainless steel, and special alloy

Overview and Application

The ME670 Series V-type ball valve has a single seat. With powerful flow capacity, it has large shear force and self-cleaning function, especially applicable to fiber-related or tiny fixed granular mediums, such as fiber, sludge, and ore pulp; it is extensively applied to the oil refining, papermaking, chemical engineering, petrochemical, and other industries.

Application Occasions

- ◇Pulp and fiber control for papermaking
- ◇Slurry control for biochemistry
- ◇Sludge control for the environment protection industry
- ◇Fluid control for applications with dust and hard particles
- ◇Various flow controls and pressure controls

产品认证 Product Certification

TUV IEC61508-SIL3安全完整性功能认证
TUV ISO15848低泄漏认证
TUV API607防火认证

TUV IEC61508-SIL3 Certification of safety and integrated functions
TUV ISO15848 Low-leakage certification
TUV API607 Fireproofing certification

**ME670****旋转控制阀**

Rotary Control Valve

**概述及应用**

ME670旋转控制阀，是在偏心阀的基础上，综合了球阀、半球阀、多偏心蝶阀和单座阀的优点，能达到VI级泄漏等级，尤其适用于大流量、高粘度和含有颗粒状结垢结晶等介质的场合。

Overview and Application

Based on the eccentric valves, the ME670 rotary control valve combines the strengths of ball valves, semi-ball valves, multi-eccentric butterfly valves, and single seated valves. Being able to reach the VI leakage level, it is especially applicable to scenarios of large flows, high viscosity and those with granular scaling, crystal, and other mediums.

技术参数 Technical Parameters

公称通径Nominal diameter	DN15~DN500(1/2"~20")
压力等级Pressure grade	PN16~PN50(Class150~300)
工作温度Operating temperature	-40℃~500℃
连接方式Connection	法兰、对夹 Flange, wafer
密封形式Sealing	陶瓷、金属密封 Ceramic, Metal seal
主要材质Main materials	碳钢、不锈钢、合金钢等 Carbon steel, stainless steel and alloy steel, etc.



ME650

内衬全陶瓷球阀

Fully Ceramic Lined Ball Valve



概述及应用

ME650系列内衬全陶瓷球阀，阀体采用全锻件结构，适用于高腐蚀、高磨损、高温中压场合，和其他强腐蚀、纤维、高硬度颗粒介质。

主要材质

- ◇ 阀体：碳钢、不锈钢
- ◇ 阀芯：陶瓷
- ◇ 阀座：陶瓷

技术参数 Technical Parameters

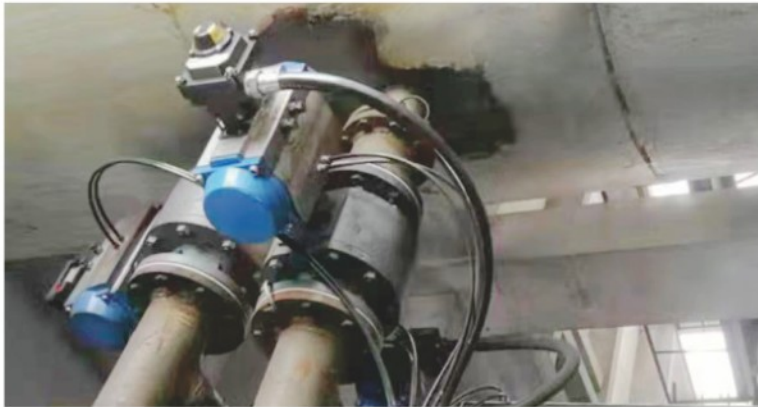
公称通径Nominal diameter	DN15~DN300(1/2"~12")
压力等级Pressure grade	PN16~PN100(Class150~900)
工作温度Operating temperature	≤425℃
连接方式Connection	法兰 Flange

Overview and Application

The ME650 Series valves are equipped with full ceramic ball valves, and wholly-forged structures are used for the body. Such valves are applicable to highly corrosive, highly wearing, high temperature and medium pressure, and other scenarios as well as other highly corrosive, fiber, and high-rigidity granular mediums.

Main material

- ◇ Body: carbon steel, stainless steel
- ◇ Valve core: ceramic
- ◇ Seat: ceramic



ME650

钢衬球阀

Steel Lined Ball Valve



概述及应用

ME650系列钢衬球阀，阀体及内件均全衬或包裹PTFE/PFA/FEP等，双重密封设计，适用于高腐蚀性流体介质，如酸碱等强腐蚀性场合；广泛应用于石油、化工、冶金、制药等行业。

主要材质

- ◇ 阀体：碳钢、不锈钢
- ◇ 阀芯：不锈钢衬PFA
- ◇ 阀座：PTFE、F46、PFA

技术参数 Technical Parameters

公称通径Nominal diameter	DN15~DN200(1/2"~8")
压力等级Pressure grade	PN10~PN25(Class150~300)
工作温度Operating temperature	-40℃~180℃
连接方式Connection	法兰 Flange

Overview and Application

The ME650 Series steel lined ball valves, The body and internal parts are lined or wrapped with PTFE/PFA/FEP, and the valve is equipped with dual seal. The valves are applicable to highly corrosive fluid mediums, such as acid, alkali, and other highly corrosive scenarios. They are extensively applied to the petroleum, chemical engineering, metallurgy, pharmaceutical, and other industries.

Main material

- ◇ Body: carbon steel, stainless steel
- ◇ Valve core: stainless steel lined with PFA
- ◇ Seat: PTFE, F46, PFA



ME670

中线衬胶蝶阀

Concentric Rubber Lined Butterfly Valve



概述及应用

ME670系列中线衬胶蝶阀在电力、冶金、化工、食品、市政、能源等系统广泛应用于液体、气体、半流体管路上作为截断或者调节装置应用，如湿法脱硫、水处理、消防及市政管路等。

产品特点

- ◇ ISO 5211标准顶法兰
- ◇ 阀体全衬胶设计
- ◇ 通轴无销，弧线阀板
- ◇ 双向承压，双向密封
- ◇ 阀杆三重密封
- ◇ 多种材质配置，应用不同介质

主要材质

- ◇ 阀体：球铁、碳钢、不锈钢
- ◇ 阀板：球铁、碳钢、不锈钢、双相钢、合金钢等
- ◇ 阀座：EPDM、NBR、VITON等

技术参数 Technical Parameters

公称通径Nominal diameter	DN50~DN3000(2"~120")
压力等级Pressure grade	PN6~PN16(Class150)
工作温度Operating temperature	-20℃~100℃
连接方式Connection	对夹、支耳、法兰 Wafer, support lug, and flange

Overview and Application

The ME670 Series concentric rubber lined butterfly valves are extensively applied to electric power, metallurgy, chemical engineering, food, municipal works, energy, and other systems. They are used as shut-off devices or regulators for liquid, gas, or semi-fluid pipelines, such as WFGD, water treatment, fire control, and municipal pipelines.

Product Features

- ◇ ISO 5211 top flange
- ◇ Body with rubber lining design
- ◇ Free from pins, arc-shaped valve plate
- ◇ Two-way pressure-bearing and sealing
- ◇ Triple seal of valve stem
- ◇ Multiple materials for different mediums

Main material

- ◇ Body: ductile iron, carbon steel, stainless steel
- ◇ Plate: ductile iron, carbon steel, stainless steel, duplex steel, alloy steel, etc
- ◇ Seat: EPDM, NBR, VITON, etc



ME670

双偏心高性能蝶阀

Double-offset High-performance Butterfly Valve



概述及应用

ME670系列双偏心高性能蝶阀，其结构采用偏心原理设计；被广泛地应用到冶金、电力、石油、化工、空气、煤气、可燃气体以及给排水等腐蚀性介质的管道上，如海水淡化、空分、高中压凝结水、煤气等工况。

主要材质

- ◇ 阀体：碳钢、不锈钢、合金钢等
- ◇ 阀板：碳钢、不锈钢、合金钢等

产品认证 Product Certification

TUV IEC61508-SIL3安全完整性功能认证
TUV ISO15848低泄漏认证
TUV API607防火认证
TUV IEC61508-SIL3 Certification of safety and integrated functions
TUV ISO15848 Low-leakage certification
TUV API607 Fireproofing certification

技术参数 Technical Parameters

公称通径Nominal diameter	DN40~DN1200(1-1/2"~48")
压力等级Pressure grade	PN6~PN100(Class150~600)
工作温度Operating temperature	-50℃~200℃
连接方式Connection	对夹、支耳、法兰 Wafer, support lug, and flange

Overview and Application

The eccentricity principle is adopted for the structure of the ME670 Series double-offset high-performance butterfly valve. It is widely applied to metallurgy, electric power, petroleum, chemical engineering, air, gas, combustible gases, water supply and drainage, and pipelines of corrosive mediums, as well as working conditions such as sea water desalination, air separation, high and medium pressure condensed water, and gas.

Main material

- ◇ Body: carbon steel, stainless steel and alloy steel, etc
- ◇ Plate: carbon steel, stainless steel and alloy steel, etc



ME670**全金属三偏心硬密封蝶阀**

All Metal Triple-offset Metal Seal Butterfly Valve

**概述及应用**

ME670系列全金属三偏心硬密封双向压零泄漏蝶阀系列是长寿命、节能型蝶阀，其结构采用三维偏心原理设计，阀座采用全金属硬密封结构，是一种能在较高温和较高压环境上使用的高性能蝶阀。

产品特点

- ◇ 执行机构安装支架和阀杆连接符合ISO5211标准
- ◇ 纯金属密封
- ◇ 填料自动预紧设计，开关灵敏，扭矩小
- ◇ 阀座/密封件系统可根据需要现场就地更换检修

主要材质

- ◇ 阀体：碳钢、不锈钢、合金钢
- ◇ 阀板：不锈钢、合金钢
- ◇ 阀座：不锈钢、合金钢

技术参数 Technical Parameters

公称通径Nominal diameter	DN50~DN3000(2"~120")
压力等级Pressure grade	PN6~PN420(Class150~2500)
工作温度Operating temperature	-254℃~815℃
连接方式Connection	对夹、支耳、法兰、焊接 Wafer, lugs, flange, weld

Overview and Application

The ME670 Series all metal triple-offset metal seal bidirectional zero-leakage butterfly valve is an energy-saving valve with long service life. The three-dimensional eccentricity principle is adopted for the structure, and the all metal hard-sealed structure is used for the seat. It is a high-performance butterfly valve used in high temperatures and high pressures.

Product Features

- ◇ The on-off valve mounting bracket and valve stem connection conforms to ISO5211;
- ◇ Pure metal seal;
- ◇ Automatic packing pre-tightening, sensitive switch, and small torque;
- ◇ On-site replacement and inspection is available for the seat/sealing system as needed;

Main material

- ◇ Body: carbon steel, stainless steel, alloy steel
- ◇ Plate: stainless steel, alloy steel
- ◇ Seat: stainless steel, alloy steel

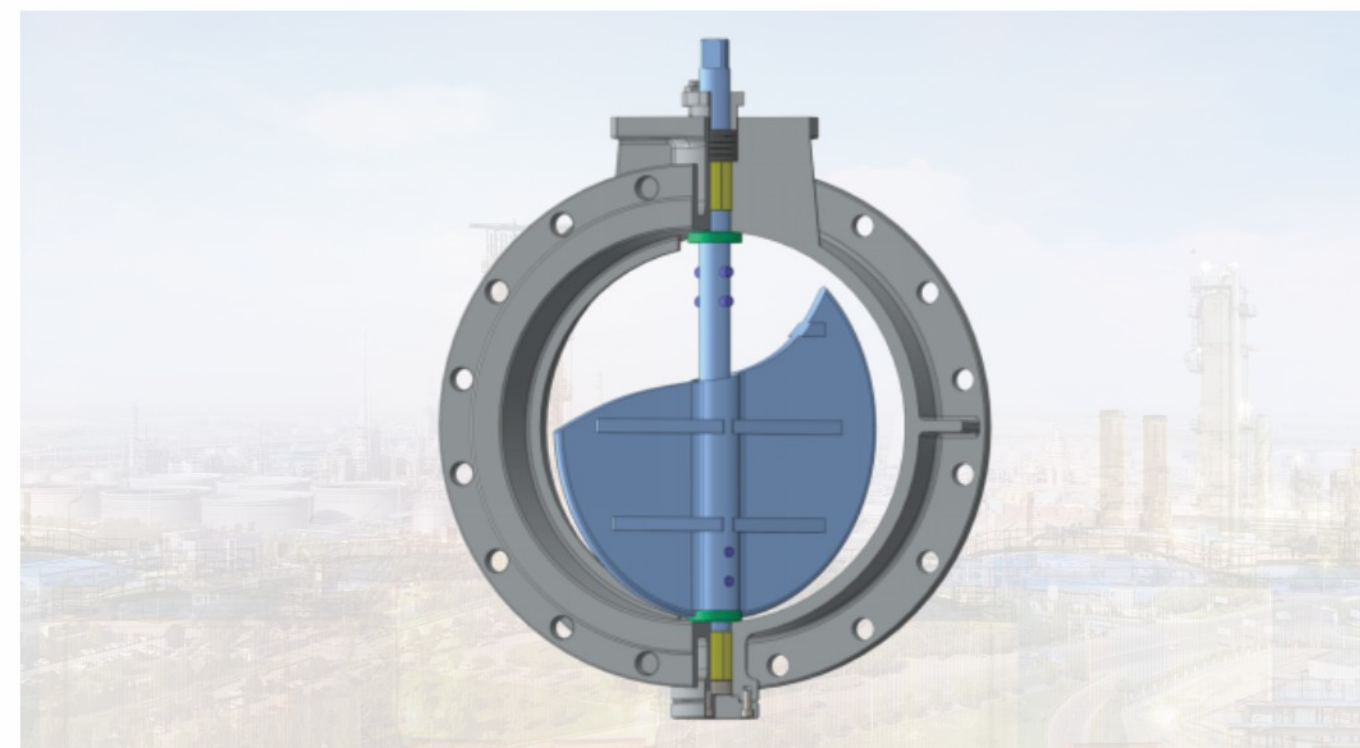
产品认证 Product Certification

TUV IEC61508-SIL3安全完整性功能认证
TUV ISO15848低泄漏认证
TUV API607防火认证

TUV IEC61508-SIL3 Certification of safety and integrated functions
TUV ISO15848 Low-leakage certification
TUV API607 Fireproofing certification

**ME670****通风蝶阀**

Ventilation Butterfly Valve

**概述及应用**

ME670系列通风蝶阀扭矩轻、结构简单。主要用于化工、建材、电站、玻璃等行业中通风系统流量调节及截止作用。

主要材质

- ◇ 阀体：球铁、碳钢、不锈钢
- ◇ 阀板：球铁、碳钢、不锈钢

技术参数 Technical Parameters

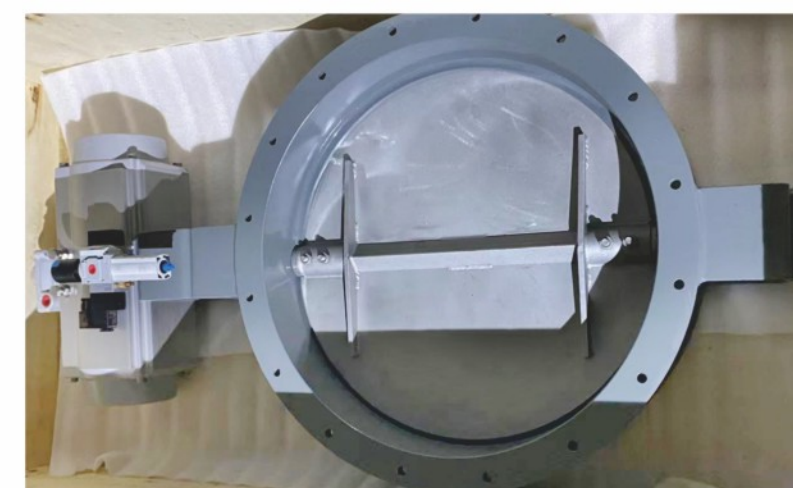
公称通径Nominal diameter	DN100~DN5000(4"~200")
压力等级Pressure grade	PN1~PN16(Class150)
工作温度Operating temperature	-20℃~700℃
连接方式Connection	对夹、法兰 Wafer, flanges

Overview and Application

The ME670 Series ventilative butterfly valve features a light torque and a simple structure. It is mainly used for the ventilation systems of chemical engineering, building materials, power stations, and glass industry for flow regulation and shut-off purposes.

Main material

- ◇ Body: ductile iron, carbon steel, stainless steel
- ◇ Plate: ductile iron, carbon steel, stainless steel



ME670

钢衬防腐蝶阀

Steel Lined Anti-corrosion Butterfly Valve



概述及应用

ME670系列钢衬防腐蝶阀，耐腐蚀性能良好，适用化工防腐要求和密封保护要求，在强酸、强碱等强腐蚀性介质场合广泛应用。

主要材质

- ◇ 阀体：球铁、碳钢、不锈钢
- ◇ 阀板：不锈钢+PTFE/PFA
- ◇ 阀座：PTFE、PFA

技术参数 Technical Parameters

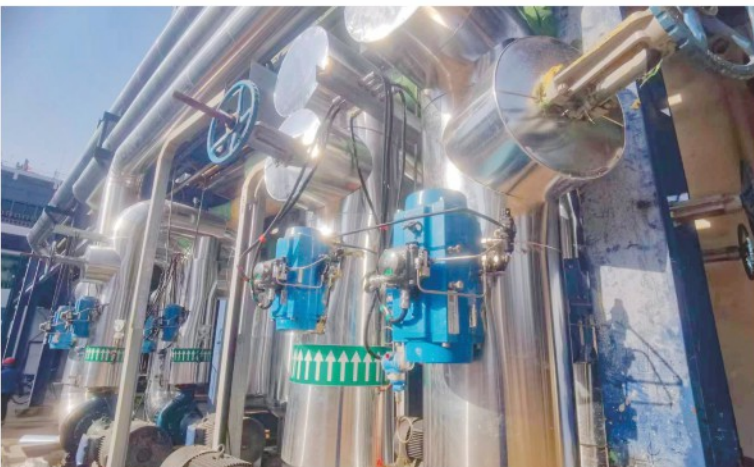
公称通径Nominal diameter	DN50~DN900(2"~36")
压力等级Pressure grade	PN6~PN16(Class150)
工作温度Operating temperature	-20℃~150℃
连接方式Connection	对夹、法兰 Wafer, flange

Overview and Application

The ME670 Series steel lined anti-corrosive butterfly valve features good corrosion-resistance. It can meet anti-corrosion requirements in chemical engineering and sealing protection requirements, being extensively applied to highly corrosive mediums and applications, such as strong acid, strong alkali.

Main material

- ◇ Body: ductile iron, carbon steel, stainless steel
- ◇ Plate: stainless steel+PTFE/PFA
- ◇ Seat: PTFE, PFA



ME10T

气动套筒调节阀

Pneumatic Cage Control Valve



概述及应用

ME10T系列采用套筒导向，压力平衡式阀芯、密封性能好、允许压差大；稳定性好，结构紧凑，广泛应用于石油、化工、冶金、制药、电力等行业中要求动态稳定性好的中低温、中低压管线的流体控制。

执行机构

气动薄膜式执行机构、气动活塞式执行机构、电动执行机构、电液动执行机构
特点：阀内件采用无螺纹连接，可在线随时更换阀内件及CV值。

主要材质

- ◇ 阀体：碳钢、合金钢、不锈钢
- ◇ 阀内件：不锈钢材料、阀芯、阀座可堆焊式STL，离子氮化处理

技术参数 Technical Parameters

公称通径Nominal diameter	DN15~DN500(1/2"~20")
压力等级Pressure grade	PN10~PN110(Class150~600)
流量特性Flow characteristics	等百分比、线性、快开 Equal percent, linear, quick opening
泄漏等级Leakage level	ASME.B16.104V(金属阀座Metal seat) ASME.B16.104VI(软阀座Soft seat)
阀盖形式 Bonnet form	标准型Standard: -30℃~260℃ 散热型Heat dissipation: -45℃~530℃ 低温型Cryogenic: -196℃~45℃ 波纹管型Bellows: -60℃~530℃
连接方式Connection	法兰式、焊接式 Flange type, welded type

Overview and Application

With a cage guide and pressure-balanced cores, the ME10T Series valves have excellent sealing properties and large allowable differential pressures; with good stability and compact structure, such valves are extensively applied to petroleum, chemical engineering, metallurgy, pharmaceuticals, electric power and other industries for the fluid control of medium and low temperature, medium and low pressure pipelines requiring favorable dynamic stability.

Actuator

Pneumatic diaphragm-type actuator, pneumatic piston-type actuator, electric actuator, and electro-hydraulic actuator
Features: Non-threaded connection is used for these internal parts; the parts and CV values can be changed any time.

Main material

- ◇ Body: carbon steel, alloy steel, stainless steel
- ◇ Valve internal parts: Stainless steel materials, core, seat with welding STL, ionic nitriding treatment

产品认证 Product Certification

TUV IEC61508-SIL3安全完整性功能认证
TUV ISO15848低泄漏认证

TUV IEC61508-SIL3 SCertification of safety and integrated functions
TUV ISO15848 Low-leakage certification



ME10P

气动单座调节阀

Single-seat Pneumatic Control Valve



概述及应用

ME10P系列采用顶部导向不平衡式结构，高强度、压降损失小，流量系数大、可调范围广、流量特性精度高，广泛应用于石油、化工、冶金、制药、电力等行业中工况差较小的场合，关闭严密，适用于对介质流量或者压力的调节。

执行机构

气动薄膜式执行机构、气动活塞式执行机构、电动执行机构、电液动执行机构
特点：阀内件采用无螺纹连接，可在线随时更换阀内件及CV值。

主要材质

- ◇ 阀体：碳钢、合金钢、不锈钢
- ◇ 阀内件：不锈钢材料、阀芯、阀座可堆焊式STL，离子氮化处理

技术参数 Technical Parameters

公称通径Nominal diameter	DN15~DN500(1/2"~20")
压力等级Pressure grade	PN10~PN110(Class150~600)
流量特性Flow characteristics	等百分比、线性、快开 Equal percent, linear, quick opening
泄漏等级Leakage level	ASME.B16.104V(金属阀座Metal seat) ASME.B16.104VI(软阀座Soft seat)
阀盖形式 Bonnet form	标准型Standard: -30℃~260℃ 散热型Heat dissipation: -45℃~530℃ 低温型Cryogenic: -196℃~45℃ 波纹管型Bellows: -60℃~530℃
连接方式Connection	法兰式、焊接式 Flange type, welded type

Overview and Application

With unbalanced structure of top guiding, the ME10P Series valves features high strength, small pressure drop loss, wide adjustable range, and high flow characteristic accuracy. They are extensively applied to the scenarios with less working condition differences in the petroleum, chemical engineering, metallurgy, pharmaceuticals, electric power, and other industries. The tightly closed valves are applicable to the regulations of medium flows or pressures.

Actuator

Pneumatic diaphragm-type actuator, pneumatic piston-type actuator, electric actuator, and electro-hydraulic actuator
Features: Non-threaded connection is used for these internal parts; the parts and CV values can be changed any time.

Main material

- ◇ Body: carbon steel, alloy steel, stainless steel
- ◇ Valve internal parts:Stainless steel materials, core, seat with welding STL, ionic nitriding treatment

产品认证 Product Certification

TUV IEC61508-SIL3安全完整性
功能认证
TUV ISO15848低泄漏认证

TUV IEC61508-SIL3 SCertification
of safety and integrated functions
TUV ISO15848 Low-leakage
certification



ME10P

气动内衬调节阀

Pneumatic Lining Control Valve



概述及应用

ME10P系列采用单座阀结构，将“耐腐蚀王”聚四氟乙烯材料内嵌于阀体内腔，保证了于介质接触的部分均为聚四氟乙烯材料。具有耐腐蚀性好、体积小、重量轻、动作平稳、可靠等优点，广泛应用于石油、化工、冶金、制药等行业中的各种强腐蚀介质场合（如：盐酸、氮气、硫酸等）。

执行机构

气动薄膜式执行机构、气动活塞式执行机构、电动执行机构、电液动执行机构

主要材质

- ◇ 阀体：碳钢+F46、不锈钢+F46
- ◇ 阀内件：不锈钢+F46

技术参数 Technical Parameters

公称通径Nominal diameter	DN15~DN300(1/2"~12")
压力等级Pressure grade	PN16~PN25(Class150)
流量特性Flow characteristics	等百分比、线性、快开 Equal percent, linear, quick opening
泄漏等级Leakage level	ASME.B16.104VI(软阀座Soft seat)
阀盖形式 Bonnet form	标准型Standard: -30℃~180℃ 波纹管型Bellows: -30℃~180℃
连接方式Connection	法兰式 Flange type

Overview and Application

The single seated valve structure is used for the ME10P Series valves. The best corrosion-resistant material, PFA, is embedded in the valve chamber, ensuring that the parts contacting the medium are PFA. With the advantages such as good corrosion-resistance, small volume, light weight, stable movement, and good reliability, these valves are extensively applied to the highly corrosive mediums and scenarios of the petroleum, chemical engineering, metallurgy, pharmaceuticals, and other industries (e.g.: hydrochloric acid, nitrogen, sulfuric acid, etc.).

Actuator

Pneumatic diaphragm actuator, pneumatic piston actuator, electric actuator, electro-hydraulic actuator

Main material

- ◇ Body: carbon steel+F46, stainless steel+F46
- ◇ Valve trim: stainless steel+F46



ME10P / 气动波纹管调节阀
/ Pneumatic Bellows Control Valve



概述及应用

ME10P系列采用套筒导向，压力平衡式阀芯，密封性能好、允许压差大，稳定性好，结构紧凑，波纹管密封的上阀盖和波纹管部件，确保介质无外漏。广泛应用于石油、化工、冶金、制药电力等行业中有毒、腐蚀等要求严密密封的场合。

执行机构

气动薄膜式执行机构、气动活塞式执行机构、电动执行机构、电液动执行机构
特点：阀内件采用无螺纹连接，可在线随时更换阀内件及CV值。

主要材质

- ◇ 阀体：碳钢、合金钢、不锈钢
- ◇ 阀内件：不锈钢材料、阀芯、阀座可堆焊式STL，离子氮化处理

技术参数 Technical Parameters

公称通径Nominal diameter	DN20~DN400(3/4"~16")
压力等级Pressure grade	PN16~PN63(Class150~600)
流量特性Flow characteristics	等百分比、线性、快开 Equal percent, linear, quick opening
泄漏等级Leakage level	ASME.B16.104V(金属阀座Metal seat) ASMEB16.104VI(软阀座Soft seat)
阀盖形式 Bonnet form	波纹管型 Bellows: -60℃~530℃
连接方式Connection	法兰式、焊接式 Flange type, welded type

Overview and Application

With a cage guide and pressure-balanced cores, the ME10P Series valves have excellent sealing properties and large allowable differential pressures; with good stability and compact structure, the upper closure with bellow seal and bellow seal pipe parts can guarantee the medium is free from leakage. The valves are extensively applied to the poisonous, corrosive scenarios requiring rigorous sealing in the petroleum, chemical engineering, metallurgy, pharmaceuticals, electric power, and other industries.

Actuator

Pneumatic diaphragm-type actuator, pneumatic piston-type actuator, electric actuator, and electro-hydraulic actuator
Features: Non-threaded connection is used for these internal parts; the parts and CV values can be changed any time.

Main material

- ◇ Body: carbon steel, alloy steel, stainless steel
- ◇ Valve internal parts:Stainless steel materials, core, seat with welding STL, ionic nitriding treatment

产品认证 Product Certification

TUV IEC61508-SIL3安全完整性功能认证
TUV ISO 15848低泄漏认证

TUV IEC61508-SIL3 SCertification of safety and integrated functions
TUV ISO 15848 Low-leakage certification



ME13 / 三通合/分流调节阀
/ Three-way Combined/Divided Control Valve



概述及应用

ME13系列三通合/分流调节阀，采用套筒导向、压力不平衡式阀芯，标准合/分流路设计为不平衡双座内件结构，同时也可以根据工况设计成降噪、防汽蚀等特殊阀笼结构，广泛应用于石油、化工、冶金、制药、电力等行业中对介质流量或者压力的调节与控制（分流或合流）。

执行机构

气动薄膜式执行机构、气动活塞式执行机构、电动执行机构、电液动执行机构

主要材质

- ◇ 阀体：碳钢、合金钢、不锈钢
- ◇ 阀内件：不锈钢材料、阀芯、阀座可堆焊式STL，离子氮化处理

技术参数 Technical Parameters

公称通径Nominal diameter	DN25~DN400(1"~16")
压力等级Pressure grade	PN16~PN63(Class150~600)
流量特性Flow characteristics	等百分比、线性、快开 Equal percent, linear, quick opening
泄漏等级Leakage level	ASME.B16.104V(金属阀座Metal seat)
阀盖形式 Valve cover form	标准型Standard: -30℃~260℃ 散热型Heat dissipation: -45℃~530℃ 低温型Cryogenic: -196℃~45℃ 波纹管型Bellows: -60℃~530℃
连接方式Connection	法兰式、焊接式 Flange type, welded type

Overview and Application

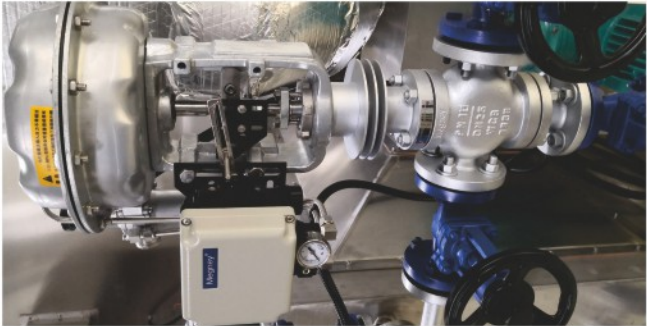
The ME13 Series three-way convergence/diversion control valve has a cage guide, pressure-unbalanced cores; the standard convergence/diversion is designed as unbalanced dual-seat internal structure. It can be designed as a special valve cage structure for noise reduction and anti-gas etching as per working conditions. Such valves are extensively applied to the petroleum, chemical engineering, metallurgy, pharmaceutical, electric power, and other industries for the regulation and control of medium flow or pressure (convergence or diversion).

Actuator

Pneumatic diaphragm-type actuator, pneumatic piston-type actuator, electric actuator, and electro-hydraulic actuator

Main material

- ◇ Body: carbon steel, alloy steel, stainless steel
- ◇ Valve internal parts:Stainless steel materials, core, seat with welding STL, ionic nitriding treatment



ME300P 自力式压力调节阀

Self-Operated Pressure Control Valve



概述及应用

ME300P自力式压力调节阀，由控制阀门、执行器和一个设定压力的弹簧组成。适用于非腐蚀性的液体、气体和蒸汽，在系统管道中的阀前（当阀前压力升高时，控制阀开启）或阀后（当阀后压力升高时，控制阀关闭）压力控制。广泛应用于石油、化工、电力、冶金、医药、食品、纺织、机械等。

执行机构

薄膜式执行机构（自带），活塞式执行机构（自带）

主要材质

- ◇ 阀体：碳钢、合金钢、不锈钢
- ◇ 阀内件：不锈钢材料、阀芯、阀座可堆焊式STL，离子氮化处理

技术参数 Technical Parameters

公称通径Nominal diameter	DN20~DN300(3/4"~12")
压力等级Pressure grade	PN16~PN63(Class150~400)
流量特性Flow characteristics	快开 Quick opening
泄漏等级Leakage level	ASME.B16.104V(金属阀座Metal seat) ASMEB16.104VI(软阀座Soft seat)
阀盖形式 Valve cover form	标准型Standard: -30℃~260℃ 中温型Mid-temperature: -30℃~350℃
连接方式Connection	法兰式、焊接式 Flange type, welded type

Overview and Application

The ME300P self-operated pressure control valve is composed of a control valve, an actuator and a spring with set pressure. The valve is applicable to non-corrosive liquids, gases, and steam for the pressure control before valving (the control valve is turned on when the pressure rises) or after valving (the control valve is turned off when the pressure rises) for the system pipeline. The valve is extensively applied to petroleum, chemical engineering, electric power, metallurgy, medicine, food, textile, and machinery.

Actuator

Diaphragm type actuator (self-contained),
piston type actuator (self-contained)

Main material

- ◇ Body: carbon steel, alloy steel, stainless steel
- ◇ Valve internal parts: Stainless steel materials, core, seat with welding STL, ionic nitriding treatment



ME300W02 氮封装置控制阀

Nitrogen Seal Control Valve



概述及应用

ME300W02氮封装置控制阀，由控制阀门、执行器、压力弹簧、指挥器、脉冲管等部件组成。主要用于保持容器顶部保护气体（一般为氮气）的压力恒定，以避免容器内物料与空气直接接触，防止物料挥发、被氧化，以及容器的安全。特别适用于各类大型储罐的气封保护系统。该产品具有节能、动作灵敏、运行可靠。

主要材质

- ◇ 阀体：碳钢、不锈钢
- ◇ 阀内件：不锈钢

技术参数 Technical Parameters

公称通径Nominal diameter	DN20~DN100(3/4"~4")
压力等级Pressure grade	PN16~PN64(Class150~600)
流量特性Flow characteristics	快开 Quick opening
连接方式Connection	法兰式、焊接式 Flange type, welded type

Overview and Application

The ME300W02 Nitrogen seal control valve is composed of a control valve, an actuator, a pressure spring, a director, and a pulse tube. It is mainly used to keep the constant pressure of the protective gas at the top of the container (nitrogen in most cases) to prevent the materials in the container from contacting air directly, prevent the materials from evaporating and being oxidized, and guarantee the safety of the container. It is especially applied to the air seal protection systems of various large storage tanks. The product features energy-saving properties, sensitive movements, reliable operation, and easy operation and maintenance.

Main material

- ◇ Body: carbon steel, stainless steel
- ◇ Valve internal parts: stainless steel



ME650**电动智能一体化球阀**

Electric Intelligent Integrated Ball Valve

**概述及应用**

ME650系列电动智能一体化球阀结构简单，球体为浮动结构依靠介质作用在球体上的单项力，使球体向一侧的阀座靠拢。通过挤压阀座实现密封功能，主要应用于低压的切断场合。该系列阀门是作为管道开关使用的理想产品，它具有结构紧凑、重量轻、流通能力高、切断性能强、使用寿命长等特点。目前是蒸汽、烃类、腐蚀性介质等工况的最佳选择。

产品特点

- ◇ 执行机构连接采用ISO5211国际标准
- ◇ 全通径结构及锁定装置设计
- ◇ 流通能力强、流阻小、双向密封
- ◇ 阀杆防飞出结构、防火、防静电设计

主要材质

- ◇ 阀体：碳钢、不锈钢、合金钢、双相钢等
- ◇ 阀芯：不锈钢、双相钢等
- ◇ 阀座：软密封：PTFE、R-PTFE、PPL、PEEK等
- 金属密封喷涂：STL、WC、Ni60、Cr3C2

技术参数 Technical Parameters

公称通径Nominal diameter	DN15~DN200(1/2"~8")
压力等级Pressure grade	PN16~PN100(Class150~600)
工作温度Operating temperature	-40℃~450℃
连接方式Connection	法兰、螺纹、焊接 Flange, thread, welding
密封形式Seal form	软密封、金属密封 Soft seal, Metal seal

Overview and Application

The ME650 Series electric intelligent integrated ball valve has a simple structure. With a floating structure, the ball approaches a lateral seat by relying on the single force applied by the medium onto the ball. It can achieve sealing functions by extruding the seat. It is mainly applied to low-pressure shut-off scenarios. Such valves are perfect choices for pipeline switches, for they have apparent features, such as compact structure, low weight, high flow capacity, outstanding shut-off performance, and long service life. Currently, it is the best choice for the working conditions involving steam, hydrocarbon, and any corrosive mediums.

Product Features

- ◇ The international standard ISO5211 is adopted for the actuator;
- ◇ Full-bore structure and lock device design;
- ◇ Excellent flow capacity, small flow resistance, and two-way sealing;
- ◇ Stem anti-popping structure, fireproof and anti-static design.

Main material

- ◇ Body: carbon steel, stainless steel, alloy steel, duplex steel, etc
- ◇ Valve core: stainless steel, duplex steel, etc
- ◇ Seat: Soft seal: PTFE, R-PTFE, PPL, PEEK, etc
- Metal sealing and spraying: STL, WC, Ni60, Cr3C2

**ME670****电动智能一体化中线衬胶蝶阀**

Electric Intelligent Integrated Concentric Rubber Lined Butterfly

**概述及应用**

ME670系列电动智能一体化中线衬胶蝶阀在电力、冶金、化工、食品、市政、能源等系统广泛应用于液体、气体、半流体管路上作为截断或者调节装置应用，如湿法脱硫、水处理、消防及市政管路等。

产品特点

- ◇ ISO 5211标准顶法兰
- ◇ 阀体全衬胶设计
- ◇ 通轴无销，弧线阀板
- ◇ 双向承压，双向密封
- ◇ 阀杆三重密封
- ◇ 多种材质配置，应用不同介质

主要材质

- ◇ 阀体：球铁、碳钢、不锈钢
- ◇ 阀板：球铁、碳钢、不锈钢、双相钢、合金钢等
- ◇ 阀座：EPDM、NBR、VITON等

技术参数 Technical Parameters

公称通径Nominal diameter	DN50~DN3000(2"~120")
压力等级Pressure grade	PN6~PN16(Class150)
工作温度Operating temperature	-20℃~100℃
连接方式Connection	对夹、支耳、法兰 Wafer, lugs, flanges

Overview and Application

The ME670 Series electric intelligent integrated concentric rubber lined butterfly valves are extensively applied to electric power, metallurgy, chemical engineering, food, municipal works, energy, and other systems. They are used as shut-off devices or regulators for liquid, gas, or semi-fluid pipelines, such as WFGD, water treatment, fire control, and municipal pipelines.

Product Features

- ◇ ISO 5211 top flange
- ◇ Body with rubber lining design
- ◇ Free from pins, arc-shaped valve plate
- ◇ Two-way pressure-bearing and sealing
- ◇ Triple seal of stem
- ◇ Multiple materials for different mediums

Main material

- ◇ Body: ductile iron, carbon steel, stainless steel
- ◇ Plate: ductile iron, carbon steel, stainless steel, duplex steel, alloy steel, etc
- ◇ Seat: EPDM, NBR, VITON, etc



ME10DJ

气动紧急切断阀

Pneumatic Emergency Shut-off Valve



概述及应用

ME10DJ系列气动紧急切断阀适用于低温贮槽上切断流通介质，特别是在出现火情故障能及时切断介质。广泛用于LNG、液态乙烯、液核、液化天然气及其它低温介质。

主要材质

- ◇ 阀体：CF8
- ◇ 阀芯：304

技术参数 Technical Parameters

公称通径Nominal diameter	DN10~DN200
压力等级Pressure grade	PN40
工作温度Operating temperature	-196℃~70℃
连接方式Connection	法兰、螺纹、焊接 Flange, thread, welding
密封形式Seal form	软密封、金属密封 Soft seal, Metal seal
适用介质Applicable Medium	LNG/L02/LN2/LAR/CO2

Overview and Application

The ME10DJ Series pneumatic emergency shut-off valve is applicable to shutting off flowing medium on any cryogenic tank, especially cutting off the medium in case of a fire. The valves are extensively applied to LNG, liquified ethylene, liquid core, liquefied natural gas, and other low temperature mediums.

Main material

- ◇ Body: CF8
- ◇ Valve core: 304



ME50X

卡套式旋塞阀

Ferrule Plug Valve



概述及应用

ME50X系列卡套式旋塞阀产品它的密封性是通过卡套四周的密封来实现，独特的360°金属唇边保护固定卡套，阀门没有空腔介质积聚，金属唇边在旋塞转时提供自洁的作用，适用于粘性、易结垢的工况。

主要材质

- ◇ 阀体：碳钢、不锈钢、合金钢、双相钢等
- ◇ 阀芯：不锈钢、双相钢等
- ◇ 阀座：软密封：PTFE、R-PTFE、PPL、PEEK等
- ◇ 金属密封喷涂：STL、WC、Ni60

技术参数 Technical Parameters

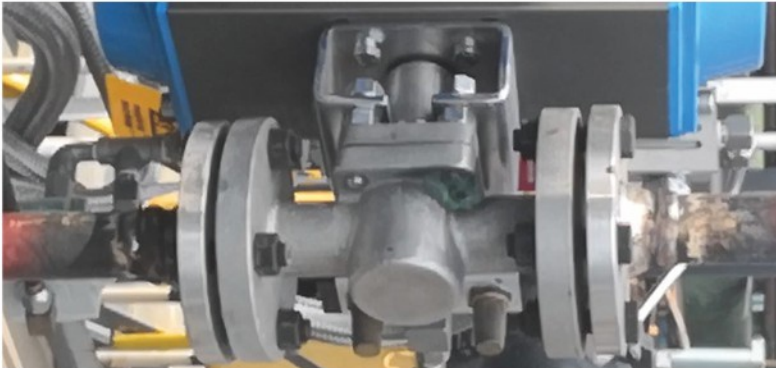
公称通径Nominal diameter	DN15~DN350
压力等级Pressure grade	Class150~900LB
流量特性Flow characteristics	线性、快开 Linear, fast opening
泄漏等级Leakage level	ASME.B16.104V(金属阀座Metal seat) ASME.B16.104VI(软阀座Soft seat)
工作温度Operating temperature	-40℃~450℃
连接方式Connection	法兰 Flanges
密封形式Seal form	软密封、金属密封 Soft seal, Metal seal

Overview and Application

The sealing properties of the ME50X Series ferrule plug valve are achieved through the seals around the ferrule; the unique 360° metal lip protects the fixed ferrule; the valve has no accumulated medium in the chamber, and the metal lip can provide self-cleaning functions when rotation. The valve is applied to working conditions involving sticky and scaling problems.

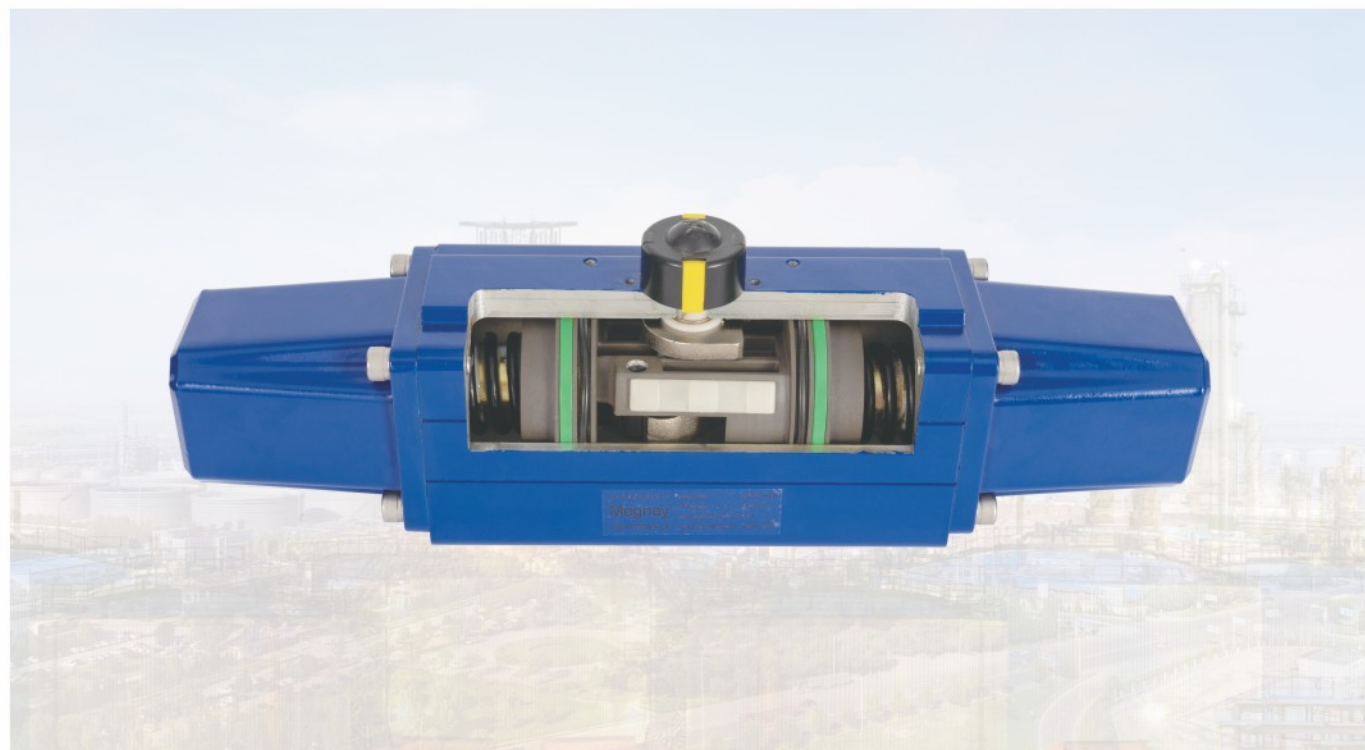
Main material

- ◇ Body: carbon steel, stainless steel, alloy steel, duplex steel, etc
- ◇ Valve core: stainless steel, duplex steel, etc
- ◇ Seat: Soft seal: PTFE, R-PTFE, PPL, PEEK, etc
- ◇ Metal sealing and spraying: STL, WC, Ni60



ME 气动执行机构

Pneumatic Actuator



概述及应用

ME系列气动执行机构采用的是拨叉式结构，相比同一缸径尺寸的齿轮齿条结构执行器，输出的扭矩更大，除此之外，拨叉式结构动作传递给执行器输出产生的扭矩曲线，更匹配角行程旋转类阀门的力矩曲线，如球阀、蝶阀。广泛应用于石油、化工、冶金、制药、电力等行业中的生产过程中。

产品特点

- ◇气源接口符合VDI/VDE3845 NAMUR标准；
- ◇独立行程调节，精确的全开全关位置调整，可调角度 $\pm 10^\circ$ ；
- ◇顶部安装孔符合VDI/VDE3845，可安装定位器，限位开关等附件；
- ◇输出轴的上、下两个金属自润滑轴承嵌入在缸体上，这种刚性支撑设计区别于其他执行器的工程塑料材质承载结构，最大限度的保护了输出轴，使其一直处于垂直的状态，不会受外力的影响发生倾斜，造成密封圈偏磨而减低使用寿命；
- ◇单作用执行机构采用了弹簧静音复合式结构，完全避免了弹簧变形，使弹簧寿命更长更可靠；
- ◇带负载实验测试：超过1300000次无泄漏。

技术参数 Technical Parameters

输出力矩Output Torque	单作用Single action:5~46979N.m 双作用Double action:11~106910N.m
气源压力Air pressure	3bar~8bar
环境温度Ambient temperature	-20°C~+80°C (标准Standard) -40°C~+160°C (特殊Special)
顶法兰Top flange	ISO5211/DIN3337

Overview and Application

The shift fork structure is used for the ME Series pneumatic actuator. Compared with the gear rack actuator of the same cylinder diameter, it has a larger torque. Besides, the torque curves produced by the actuator receiving the shift fork movements better match the momental curves of rotary valves with angular travel, such as ball valves and butterfly valves. The valves are extensively applied to the production processes of the petroleum, chemical engineering, metallurgy, pharmaceuticals, electric power, and other industries.

Product Features

- ◇The air source port complies with the VDI/VDE 3845 NAMUR standard;
- ◇Independent stroke adjustment, accurate full opening, closing position adjustment, adjustable angle $\pm 10^\circ$;
- ◇The top mounting hole conforms to the VDI/VDE 3845 standard, and accessories such as a positioner, a limit switch can be installed;
- ◇The upper, lower two metal self-lubricating bearings of the output shaft are embedded on the cylinder. Unlike the engineering plastic bearing structures of other actuators, the rigid support design can protect the output shaft to the greatest extent, making it vertical all the time without inclination due to external forces, and such inclination may reduce the service life by wearing the seal ring;
- ◇The single-action actuator uses the spring mute composite structure, fully avoiding spring deformations and extending the service life of the spring;
- ◇Tests with loads: More than 1,300,000 zero-leakage conditions.

可选附件 Optional Accessories

电磁阀、定位器、过滤减压阀、限位开关等。
Magnetic valve, positioner, filtering relief valve, limit switch, etc.

MEB 气动执行机构

Pneumatic Actuator



概述及应用

MEB系列气动执行机构主要特点是输出力矩大，特别适用于中、大口径阀门的自动化及远程控制操作，广泛应用于石油、化工、冶金、制药、电力等行业的生产过程中。

产品特点

- ◇模块化设计：
功能模块相互组合，相互更换，满足各种工艺控制功能需要；
- ◇安全性：
预装式弹簧模块，消除意外释放弹力，防止误操作；
- ◇防护性：
符合IP65或IP67防护标准，各零部件的连接处均配有O型密封圈；
- ◇耐磨和润滑：
活塞杆和活塞的滑动摩擦部分均配有自润滑轴承；
- ◇标准化：顶部驱动轴的接口尺寸符合NAMUR标准，便于安装定位器等附件。

技术参数 Technical Parameters

输出力矩Output Torque	单作用Single action:450~112369N.m 双作用Double action:850~263894N.m
气源压力Air pressure	3bar~10bar
环境温度Ambient temperature	标准(ST)-20°C~+80°C(丁腈橡胶NBR) 高温(HT)-15°C~+150°C(氟橡胶VITON) 低温(LT)-40°C~+80°C(硅橡胶Silastic)
顶法兰Top flange	ISO5211/DIN3337

Overview and Application

The MEB Series pneumatic actuators feature large output torques. They are especially applicable to the automation and remote control of valves with medium, large calibers. They are extensively applied to the production processes of the petroleum, chemical engineering, metallurgy, pharmaceuticals, electric power, and other industries.

Product Features

- ◇Modular design:
The functional modules are mutually combined and replaced to satisfy various process control and functional requirements;
- ◇Safety:
The preassembled spring module can eliminate accidental released elastic force to prevent maloperations;
- ◇Protection:
It complies with IP65 or IP67; the connection of each component is equipped with an O-ring;
- ◇Wear-resistance & lubrication:
Self-lubricating bearings are equipped for the piston rod and the sliding friction parts of the piston;
- ◇Standardization:
The connector size of the top drive shaft conforms to the NAMUR standard, and it is easy to install accessories such as positioners.

可选附件 Optional Accessories

电磁阀、定位器、过滤减压阀、限位开关等。
Magnetic valve, positioner, filtering relief valve, limit switch, etc.

MEGN

电动执行机构

Electric Actuator



概述及应用

MEGN电动执行机构分为：分体式、一体化式、智能一体化。广泛应用于石油、化工、冶金、制药、电力等行业的生产过程中。

产品特点

- ◇连接：与阀门的安装连接符合ISO 5211标准；
- ◇自锁功能：双蜗轮蜗杆机构均具有自锁功能，防止反转；
- ◇电机：特殊设计的感应电机，内置热保护元器件，F级绝缘；
- ◇保护功能：相序、断相、过热、过载保护，ESD紧急操作等功能；
- ◇位置传感器：编码器技术，角度任意定位，控制精度高。

技术参数 Technical Parameters

输出力矩Output Torque	
工作电压(可选)Operating voltage (optional)	
控制信号Control signal	
模拟信号输出Analog signal output	
调节精度Adjustment precision	
环境温度Ambient temperature	
工作环境Operating environment	
工作时间Working hours	
防护等级Protection grade	

Overview and Application

The MEGN electric actuators have three types, namely split type, integrated type, and smart integrated type. They are extensively applied to the production processes of the petroleum, chemical engineering, metallurgy, pharmaceuticals, electric power, and other industries.

Product Features

- ◇Connection: The installation and connection with the valve conform to the ISO 5211;
- ◇Self-locking: The dual worm gear mechanism has self-locking functions to prevent inversion;
- ◇Motor: The specially designed induction motor has built-in thermal protective components that have Grade-F insulation;
- ◇Protective functions: Phase sequence, loss of phase, overheating, and overload protection, ESD emergency operation, and other functions;
- ◇Position sensor: Encoder technology, random positioning of angles, and high control accuracy.

60~130000N.m
单相Single phase: AC220V50/60Hz; 三相 Three-phase: AC380V 50/60Hz
DC0~10V, DC4~20mA或ON-OFF
4~20mA DC 6组无源触点 6 groups of passive contacts
1.0%; 死区Dead zone; 0.5~9.9%可调 Adjustable
-20℃~60℃; 相对湿度Relative humidity: <90% (25℃)
不含有强腐蚀性介质 Free from highly corrosive medium
S2工作制 S2 work system
IP67/EN60529/IP68

UK MEGN GROUP
Megney® 美格尼•中国

ENGINEERING PERFORMANCE

工程业绩

